

The Management/Sales Training Program



OUR COMPANY

Stability: Founded in 1866, Sherwin-Williams is the industry leader in providing top quality coatings and related products to paint contractors, manufacturers, industrial users, and the retail trade.

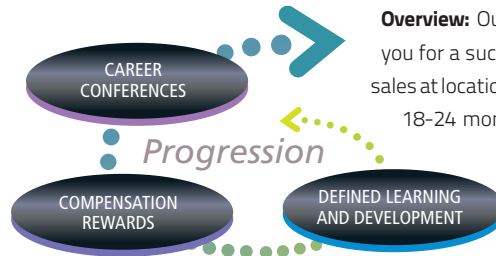
A Culture of Excellence: Recognized among CollegeGrad.com's "Top Entry Level and Intern Employer", seven core values drive the Sherwin-Williams culture and our company. These values: Integrity, People, Service, Quality, Performance, Innovation, and Growth, are reflected in our people, our products, and our business practices and relationships.

Our Brands: In addition to the Sherwin-Williams® brand, we manufacture and sell products under several other well-known and respected brand names such as Dutch Boy®, Krylon®, Minwax®, Thompson's®, Pratt & Lambert®, and Purdy®, to name a few.

Opportunities for Career Advancement: At Sherwin-Williams, over 90% of placement into managerial and professional positions comes from within the Company. We provide the necessary training and tools to assist our employees with taking an active role in defining their own career path.

More than 90% of our Store Managers, Sales Reps and District Management are promoted from within.

MANAGEMENT/SALES TRAINING PROGRAM



Overview: Our Management/Sales Training (MT) Program prepares you for a successful career in management and outside professional sales at locations throughout the nation. The Program's comprehensive 18-24 month experience is designed to provide you with the skill development and management support necessary for personal and professional growth. The Program contains a mix of experiential knowledge gained through hands-on activities, classroom training, peer networking, career conferences, online learning and ongoing education throughout your career in the areas of sales, marketing, financial management, store operations, merchandising, customer service and human resource management.

The Experience:

- **6 to 8 weeks** in a certified training store
- **A structured learning program** featuring a series of hands-on and virtual learning activities
- **Eligible for salary reviews and incentives** throughout the program
- **Peer social networking** using the latest technology
- **Career conferences** with district management every 6 months
- **One week of classroom training** at one of our 4 Sherwin-Williams University locations in Atlanta, GA; Cleveland, OH; Dallas, TX; Philadelphia, PA
- **Placement** into an Assistant Manager position
- **Ongoing** professional development and preparation for career advancement

Eligibility & Requirements:

- College graduate (business majors preferred);
- Must be legally authorized to work in country of employment without sponsorship for employment visa status;
- Valid Driver's License;
- Excellent communication skills, a good work ethic, and interest in an active, 'roll-up-your-sleeves' type of environment are essential;
- Experience in sales, customer service, food service, or construction is preferred.

Compensation & Benefits

We offer a competitive base salary with salary increases throughout the Program. In addition to our impressive base salary, we also offer incentives based on performance. Additional benefits include: health, dental and vision care; life insurance; disability insurance; 401k/stock purchase plan; company-paid pension investment plan; tuition reimbursement; employee assistance program; and various discount programs.



STIR THINGS **UP!**

The Management/Sales Training Program



CAREER PATH

The Management/Sales Training Program equips you to take one of two career paths, both of which can lead to high-level management positions within the Paint Stores Group.

Once you have completed the Management/Sales Training Program, you can choose to pursue the store management path or the sales path. During your time in the MTP, you'll learn what it takes to succeed within each position along both career paths.

QUESTIONS?

Check out the FAQ section of our website at www.sherwin.com/careers/opportunities/mtp/faq.

Please see your Career Services Office for our on-campus interview schedule or apply online at www.sherwin.com/mtp.

To learn more and apply, visit

www.sherwin.com/mtp

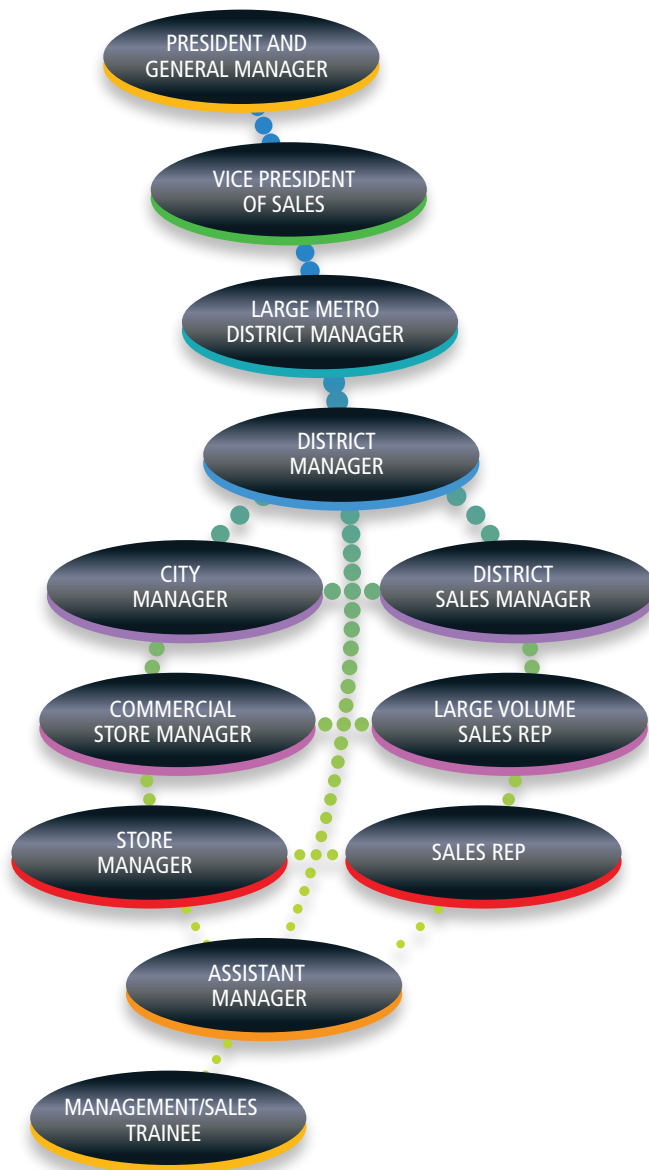


Sherwin-Williams Careers —
Management and
Sales Training Program



Join our Talent Network at

<http://bit.ly/SherwinTN>



STIR THINGS *UP!*